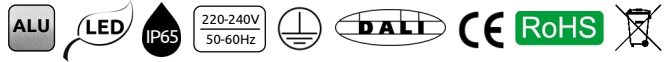




## LINIA ŚWIETLNA LED

LED LINE  
LICHTBAND

# SWDS - D



**SWDS** – diffuser based on optics system; three rows of lenses mounted directly on LED modules,  
**SWDSI54** – diffuser based on optics system (same as SWDD); IP54 protection rating  
**SWDSI65** – diffuser based on optics system (same as SWDD); IP65 protection rating



**SWDS** – Diffusor Optiksystem; drei Reihen von Linsen direkt auf LED-Modulen montiert  
**SWDSI54** – Diffusor Optiksystem (wie SWDD); Schutzart IP54  
**SWDSI65** – Diffusor Optiksystem (wie SWDD); Schutzart IP65



### Description / Beschreibung/ Dane oprawy

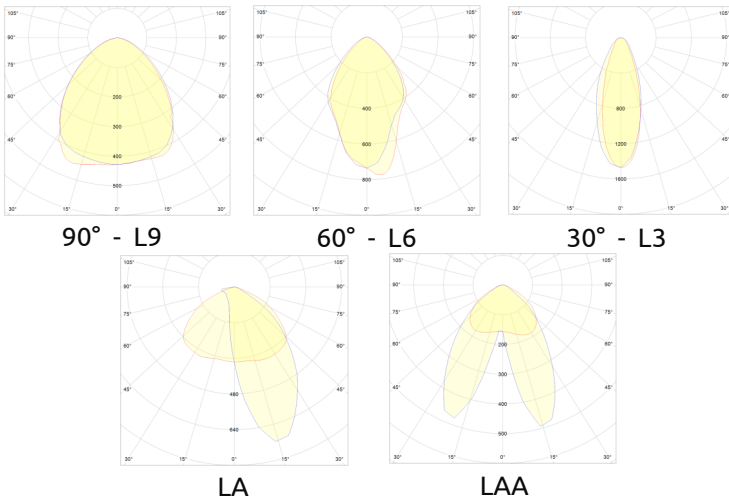
**Montage:** Euroline system, ceiling, track, suspension.  
**Color [C]:** white, silver, black  
**Control system:** ON/OFF, DALI, 1-10V  
**CRI:** Standard Ra >80. Optional Ra >90  
 Other lengths of luminaires available. Max luminaire length: 576cm

**SWDS** – dyfuzor stanowi układ optyki z trzema rzędami soczewek montowany bezpośrednio na modułach LED,  
**SWDSI54** – dyfuzor jak w oprawach SWDD; klasa szczelności IP54  
**SWDSI65** – dyfuzor jak w oprawach SWDD; klasa szczelności IP65

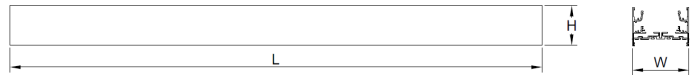


**HL - High Lumen** - SWD luminaire with increased light efficiency.

### Photometric [L]



### Dimension / Maße/ Wymiary



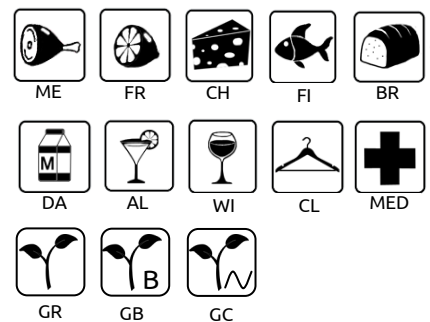
INDEX	L	W	H
SWDS—D(M)(C) <b>14</b>	1445mm	80mm	47mm
SWDS—D(M)(C) <b>23</b>	2293mm	80mm	47mm
SWDS—D(M)(C) <b>28</b>	2885mm	80mm	47mm
SWDS—D(M)(C) <b>34</b>	3437mm	80mm	47mm

### Colour [K] / Farbtemperaturen [K] / Barwa [K]

STANDARD



SPECIAL



### Lens [X] /



1



3

### Index system

SWDSD	Installation	Colour	Length	Lens	Colour temperature	Power	photometry	HL
SWDSDI54	M	C	14	X	K	60	L	Optional HighLumen
SWDSDI65								
	Single - S Euroline - E Line - L Track - R	WH SL BL		1 3	W D A B C		L9 L6 L3 LA LAA	
					SPECIAL			

\* Standardowe sterowanie: on/off. Opcjonalnie: DALI lub 1-10V  
 Standard control: on/off. Optional DALI or 1-10V.  
 Standardsteuerung: on/off. Wahlweise: DALI oder 1-10V.

## SWDS-D

Index	Power	Flux	w/l/h (mm)	lm/w
SWDSD (M)(C) 14(X)D 40(L)	40W	5800	71/1445/47	145
SWDSD (M)(C) 14(X)D 40(L) HL	40W	6800	71/1445/47	170
SWDSD (M)(C) 14(X)D 50(L)	50W	7000	71/1445/47	140
SWDSD (M)(C) 14(X)D 50(L) HL	50W	8500	71/1445/47	170
SWDSD (M)(C) 14(X)D 60(L)	60W	8100	71/1445/47	135
SWDSD (M)(C) 14(X)D 60(L) HL	60W	9900	71/1445/47	165
SWDSD (M)(C) 14(X)D 75(L)	75W	9750	71/1445/47	130
SWDSD (M)(C) 14(X)D 75(L) HL	75W	12000	71/1445/47	160
SWDSD (M)(C) 14(X)D 90(L)	90W	11250	71/1445/47	125
SWDSD (M)(C) 14(X)D 90(L) HL	90W	13950	71/1445/47	155
SWDSD (M)(C) 14(X)D 120(L)	120W	13800	71/1445/47	115
SWDSD (M)(C) 14(X)D 120(L) HL	120W	17400	71/1445/47	145
SWDSD (M)(C) 23(X)D 90(L)	90W	12150	71/2293/47	135
SWDSD (M)(C) 23(X)D 90(L) HL	90W	14850	71/2293/47	165
SWDSD (M)(C) 23(X)D 120(L)	120W	15600	71/2293/47	130
SWDSD (M)(C) 23(X)D 120(L) HL	120W	19200	71/2293/47	160
SWDSD (M)(C) 28(X)D 80(L)	80W	11600	71/2885/47	145
SWDSD (M)(C) 28(X)D 80(L) HL	80W	13600	71/2885/47	170
SWDSD (M)(C) 28(X)D 100(L)	100W	14000	71/2885/47	140
SWDSD (M)(C) 28(X)D 100(L) HL	100W	17000	71/2885/47	170
SWDSD (M)(C) 28(X)D 120(L)	120W	16200	71/2885/47	135
SWDSD (M)(C) 28(X)D 120(L) HL	120W	19800	71/2885/47	165
SWDSD (M)(C) 28(X)D 150(L)	150W	19500	71/2885/47	130
SWDSD (M)(C) 28(X)D 150(L) HL	150W	24000	71/2885/47	160
SWDSD (M)(C) 34(X)D 150(L)	150W	20250	71/3437/47	135
SWDSD (M)(C) 34(X)D 150(L) HL	150W	24750	71/3437/47	165
SWDSD (M)(C) 40(X)D 160(L)	160W	21600	71/4020/47	135
SWDSD (M)(C) 40(X)D 160(L) HL	160W	26400	71/4020/47	165
SWDSD (M)(C) 40(X)D 240(L)	240W	30000	71/4020/47	125
SWDSD (M)(C) 40(X)D 240(L) HL	240W	37200	71/4020/47	155

Luminous flux tolerance +/- 5%. Lichtstrom-Toleranz +/- 5%. Tolerancja strumienia świetlnego +/- 5%



Wersja oświetlenia góra-dół.

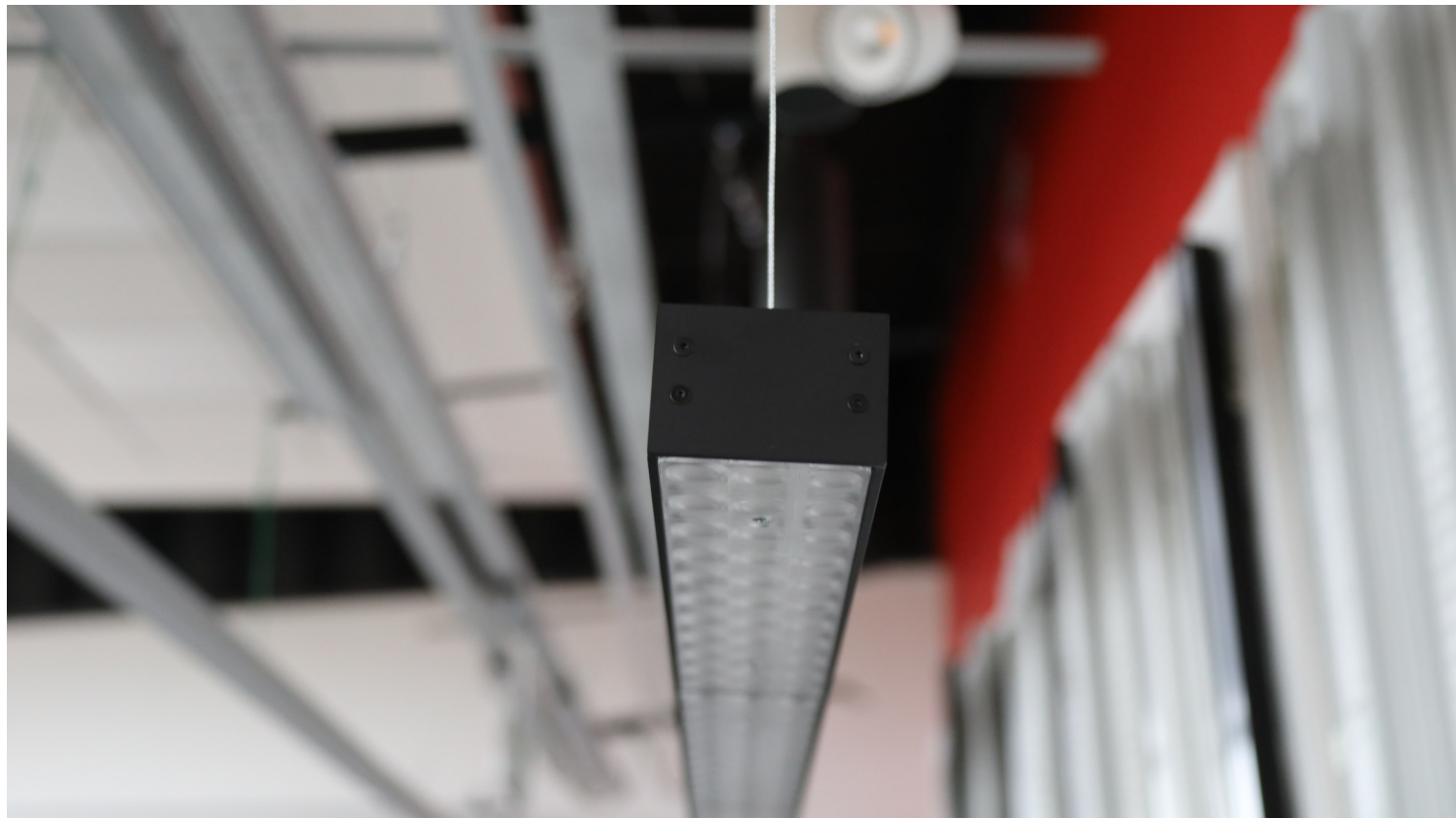


Estetyczne wykończenie. Dla lepszego wyglądu zastosowano wkręty stożkowe licujące się z zaślepką.

## SWDS-D I54

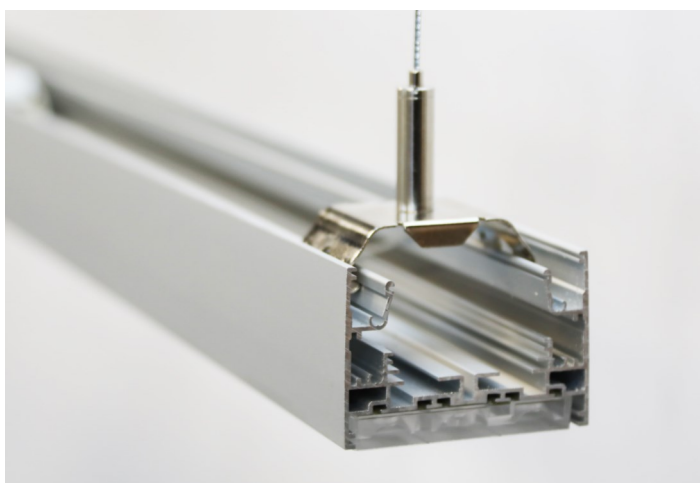
Index	Power	Flux	w/l/h (mm)	lm/w
SWDSDI54 (M)(C) 14(X)D 40(L)	40W	5800	71/1445/47	145
SWDSDI54 (M)(C) 14(X)D 40(L) HL	40W	6800	71/1445/47	170
SWDSDI54 (M)(C) 14(X)D 50(L)	50W	7000	71/1445/47	140
SWDSDI54 (M)(C) 14(X)D 50(L) HL	50W	8500	71/1445/47	170
SWDSDI54 (M)(C) 14(X)D 60(L)	60W	8100	71/1445/47	135
SWDSDI54 (M)(C) 14(X)D 60(L) HL	60W	9900	71/1445/47	165
SWDSDI54 (M)(C) 14(X)D 75(L)	75W	9750	71/1445/47	130
SWDSDI54 (M)(C) 14(X)D 75(L) HL	75W	12000	71/1445/47	160
SWDSDI54 (M)(C) 14(X)D 90(L)	90W	11250	71/1445/47	125
SWDSDI54 (M)(C) 14(X)D 90(L) HL	90W	13950	71/1445/47	155
SWDSDI54 (M)(C) 14(X)D 120(L)	120W	13800	71/1445/47	115
SWDSDI54 (M)(C) 14(X)D 120(L) HL	120W	17400	71/1445/47	145
SWDSDI54 (M)(C) 23(X)D 90(L)	90W	12150	71/2293/47	135
SWDSDI54 (M)(C) 23(X)D 90(L) HL	90W	14850	71/2293/47	165
SWDSDI54 (M)(C) 23(X)D 120(L)	120W	15600	71/2293/47	130
SWDSDI54 (M)(C) 23(X)D 120(L) HL	120W	19200	71/2293/47	160
SWDSDI54 (M)(C) 28(X)D 80(L)	80W	11600	71/2885/47	145
SWDSDI54 (M)(C) 28(X)D 80(L) HL	80W	13600	71/2885/47	170
SWDSDI54 (M)(C) 28(X)D 100(L)	100W	14000	71/2885/47	140
SWDSDI54 (M)(C) 28(X)D 100(L) HL	100W	17000	71/2885/47	170
SWDSDI54 (M)(C) 28(X)D 120(L)	120W	16200	71/2885/47	135
SWDSDI54 (M)(C) 28(X)D 120(L) HL	120W	19800	71/2885/47	165
SWDSDI54 (M)(C) 28(X)D 150(L)	150W	19500	71/2885/47	130
SWDSDI54 (M)(C) 28(X)D 150(L) HL	150W	24000	71/2885/47	160
SWDSDI54 (M)(C) 34(X)D 150(L)	150W	20250	71/3437/47	135
SWDSDI54 (M)(C) 34(X)D 150(L) HL	150W	24750	71/3437/47	165
SWDSDI54 (M)(C) 40(X)D 160(L)	160W	21600	71/4020/47	135
SWDSDI54 (M)(C) 40(X)D 160(L) HL	160W	26400	71/4020/47	165
SWDSDI54 (M)(C) 40(X)D 240(L)	240W	30000	71/4020/47	125
SWDSDI54 (M)(C) 40(X)D 240(L) HL	240W	37200	71/4020/47	155

Luminous flux tolerance +/- 5%. Lichtstrom-Toleranz +/- 5%. Tolerancja strumienia świetlnego +/- 5%

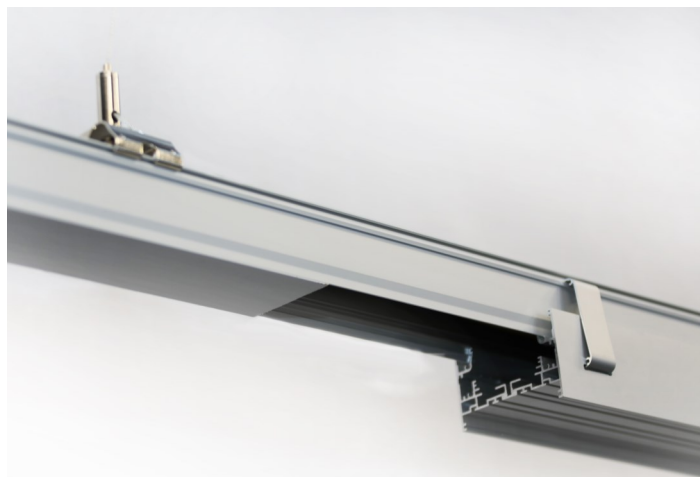


### SWDS-D I65

Index	Power	Flux (lm)	w/l/h (mm)	lm/w
SWDSDI65 (M)(C) 14(X)D 40(L)	40W	5800	71/1445/47	145
SWDSDI65 (M)(C) 14(X)D 40(L) HL	40W	6800	71/1445/47	170
SWDSDI65 (M)(C) 14(X)D 50(L)	50W	7000	71/1445/47	140
SWDSDI65 (M)(C) 14(X)D 50(L) HL	50W	8500	71/1445/47	170
SWDSDI65 (M)(C) 14(X)D 60(L)	60W	8100	71/1445/47	135
SWDSDI65 (M)(C) 14(X)D 60(L) HL	60W	9900	71/1445/47	165
SWDSDI65 (M)(C) 14(X)D 75(L)	75W	9750	71/1445/47	130
SWDSDI65 (M)(C) 14(X)D 75(L) HL	75W	12000	71/1445/47	160
SWDSDI65 (M)(C) 14(X)D 90(L)	90W	11250	71/1445/47	125
SWDSDI65 (M)(C) 14(X)D 90(L) HL	90W	13950	71/1445/47	155
SWDSDI65 (M)(C) 14(X)D 120(L)	120W	13800	71/1445/47	115
SWDSDI65 (M)(C) 14(X)D 120(L) HL	120W	17400	71/1445/47	145
SWDSDI65 (M)(C) 23(X)D 90(L)	90W	12150	71/2293/47	135
SWDSDI65 (M)(C) 23(X)D 90(L) HL	90W	14850	71/2293/47	165
SWDSDI65 (M)(C) 23(X)D 120(L)	120W	15600	71/2293/47	130
SWDSDI65 (M)(C) 23(X)D 120(L) HL	120W	19200	71/2293/47	160
SWDSDI65 (M)(C) 28(X)D 80(L)	80W	11600	71/2885/47	145
SWDSDI65 (M)(C) 28(X)D 80(L) HL	80W	13600	71/2885/47	170
SWDSDI65 (M)(C) 28(X)D 100(L)	100W	14000	71/2885/47	140
SWDSDI65 (M)(C) 28(X)D 100(L) HL	100W	17000	71/2885/47	170
SWDSDI65 (M)(C) 28(X)D 120(L)	120W	16200	71/2885/47	135
SWDSDI65 (M)(C) 28(X)D 120(L) HL	120W	19800	71/2885/47	165
SWDSDI65 (M)(C) 28(X)D 150(L)	150W	19500	71/2885/47	130
SWDSDI65 (M)(C) 28(X)D 150(L) HL	150W	24000	71/2885/47	160
SWDSDI65 (M)(C) 34(X)D 150(L)	150W	20250	71/3437/47	135
SWDSDI65 (M)(C) 34(X)D 150(L) HL	150W	24750	71/3437/47	165
SWDSDI65 (M)(C) 40(X)D 160(L)	160W	21600	71/4020/47	135
SWDSDI65 (M)(C) 40(X)D 160(L) HL	160W	26400	71/4020/47	165
SWDSDI65 (M)(C) 40(X)D 240(L)	240W	30000	71/4020/47	125
SWDSDI65 (M)(C) 40(X)D 240(L) HL	240W	37200	71/4020/47	155



Duży wybór akcesoriów i metod montażu.



Montaż do szyny SWE z klamrą zabezpieczającą oraz maskownicą.